

## AZIMUT 42

Azimut is always presenting new boats with extraordinary habitability, aesthetics and performance. As might be expected, a yard such as Azimut capable of offering a prestigious image in Italy and abroad could not do any better. The most recent products of the Avigliana yard feature considerably improved design and building characteristics and reconfirm the "small-large" motor yacht philosophy so dear to Azimut.



What reason lies behind such marvelous yachts? The answer is simple: when designing the Azimut 42, a motor yacht with an overall length of 43'7", notwithstanding the limited dimensions and the building restrictions, some habitability properties must be respected in order to offer a comfortable life on board.



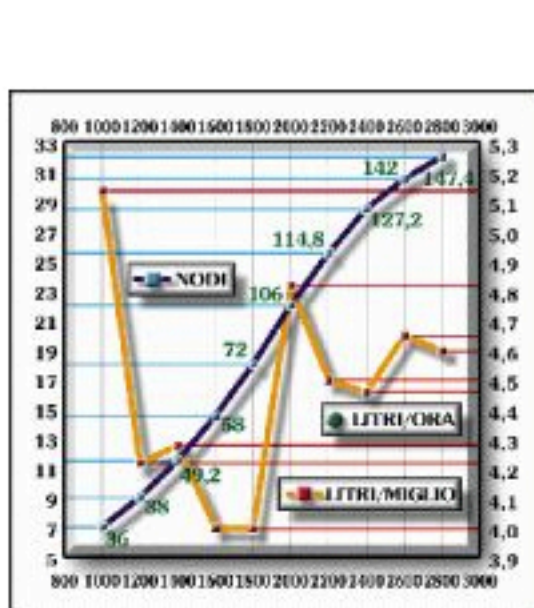
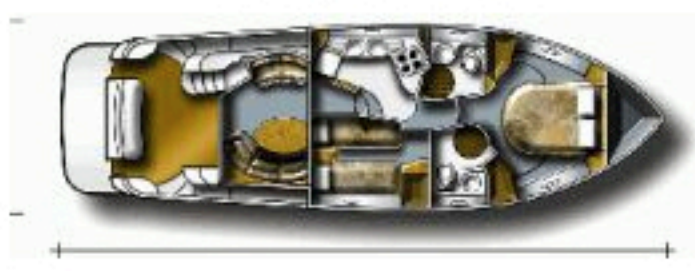
Even though the Azimut 42 with an overall length of 43'7" could imply dullness, she astonishes for her seakeeping qualities and for the swift well balanced outside line and top-quality interior design. The boat has an excellent trim at sea and the hull lines make her appear longer than her actual size. The flying bridge does not weigh heavily on the short 42' hull; on the contrary, it is low and streamlined. The deckhouse, the side decks with the typical elongated window bays, the cockpit and the flying bridge have a common denominator which respects comfort, habitability and safety.



The interiors are the most valuable aspect of the Azimut 42. Style, habitability and finishing concur to create a sophisticated and modern décor where interior architecture is not only an abstract concept but also an elegant and rational way of interpreting yacht design.

### ● TECHNICAL DATA

**Design:** Andrea Righini  
**Interior decor:** Carlo Galeazzi  
**Project:** Azimut  
**Yard:** Azimut Spa - Via Martin Luther King 9 / 11 - 10051 Avigliana (Torino) Italy - Phone +39 011.93.161 - Fax +39 011.93.67.270  
**Gross tonnage:** 19.68 t  
**Italian VAT:** 20%  
**LOA:** 43'7"  
**Beam:** 13'8"  
**Depth:** 14'5"  
**Draft from lower tip of propellers:** 3'7"  
**Light displacement:** 11.81 t  
**Full boat displacement:** 13.5 t  
**Maximum passengers capacity:** 12  
**Berths:** 4 or 6 in 2 or 3 cabins  
**Test boat power:** 2x385 hp Caterpillar 3126 DITA TD inboard engines  
**Total installed power:** 770 hp  
**Total engines and reduction gears weight:** approx. 3,753 lbs.  
**Light displacement/installed power ratio:** 15.58  
**Type of transmission:** in-line shaft  
**Maximum declared speed:** 32 knots at 2,800 rpm's  
**Cruising speed:** 28 knots at 2,400 rpm's  
**Declared fuel consumption at cruising speed:** 33 gallons/hr  
**Range at cruising speed:** 265 miles  
**Fuel capacity:** 2x158 gallons  
**Freshwater capacity:** 2x66 gallons



### ● CONSTRUCTION CHARACTERISTICS

**Hull:** deep V-hull, with 17° deadrise aft and trim tabs. Four-blade propellers in semi-nozzle

**Hull construction material:** superstructures and hull structure in Divinycell sandwich; neopentilic isofaltic gelcoat and hand-stratified GRP with glass fibers cloth (5-year guarantee against osmosis)

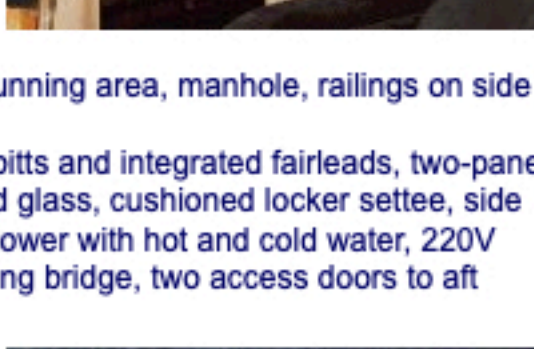
**Bow area:** stem fitting with anchor chain, bow pulpit, 1000W anchor windlass, fender locker, lateral round window bays with electrical opening, 2 mooring bits forward and 2 mooring bits amidships, fuel intake with cap, cushioned sunning area, manhole, railings on side decks

**Cockpit arrangements and fittings:** 2 mooring bits and integrated fairleads, two-panel salon access door in stainless steel and tempered glass, cushioned locker settee, side lockers, halogen lighting, engine room access, shower with hot and cold water, 220V dockside electric connection, access ladder to flying bridge, two access doors to aft platform

**Characteristics of the aft platform:** folding and stowing stainless steel and teak swimming ladder

**Superstructures and windows materials:** deck fittings are in stainless steel, windows are in tempered glass

**Descriptions and characteristics of the flying bridge:** helm station with steering wheel, engine controls and instruments (multi-function ST 6000 Plus Autohelm display, compass, echo-sounder, log, auto-pilot and rudder-angle indicator, RS 8300 SOS Shipmate VHF, Micro-Commander single lever electronic remote controls), cockpit access by means of a GRP ladder, two-seat cushioned pilot settee with locker, ample aft sunning cushioned area, GRP roll bar, stainless steel grab rails on the sides, service cabinet with optional fridge or ice-maker, 6-seat cushioned round settee.



### ● INTERIORS

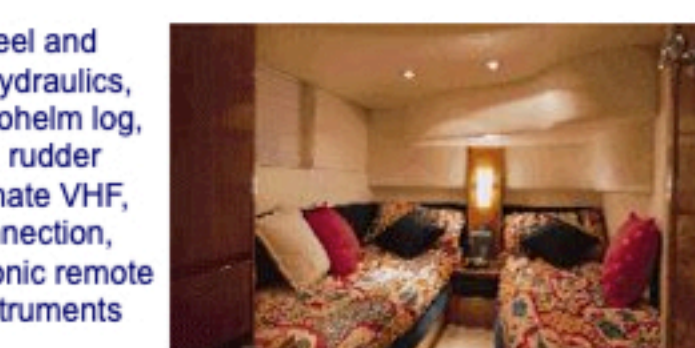
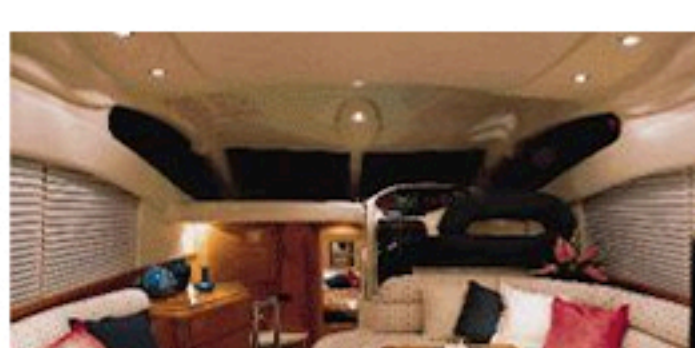
**Layout and characteristics:** the salon has a cherry-wood bar and chinaware cabinet, a cherry-wood cabinet with stereo, a 6-seat round convertible settee with walnut root and cherry-wood table to starboard, opposite there is a small settee for two. The helm station includes pilot seat and large object holder. A ladder connects salon to galley and cabins. The galley is to port of the ladder. Forward there is the master stateroom with a double bed with lockers underneath, 2 hanging lockers and private bathroom with Plexiglas shower stall.

The guest cabin includes twin beds and hanging locker; bathroom with shower stall and deluxe access doors. Interiors are in cherry-wood; bath in walnut root, linings are in deluxe textile, and ceilings are in synthetic leather; upholstery as per owner's specifications.

**Helm station in cockpit:** stainless steel and teak steering wheel, power assisted hydraulics, flap controls, multi-function ST 30 Autohelm log, echo sounder and ST 5000 auto-pilot, rudder angle indicator, RS 8300 SOS Shipmate VHF, magnetic compass, mobile phone connection, Micro-Commander single lever electronic remote controls, full engine indicators and instruments

**Chart table:** located in the dinette

**Galley:** the galley includes 3-burner range, microwave oven and grill, two sinks with water mixer and granulator worktop, 32-gallon refrigerator (or optional 62-gallon freezer/fridge), 12 and 220V sockets, cherry-wood cupboards and cabinets, garbage container, porthole, flooring in washable material. FITTINGS Standard fittings: Vacuflush SeaLand electrical toilet systems, build-in nozzle for possible installation of bow thruster, 10-gallon stainless steel water heater, SeaLand sewage collection system with discharge from deck, anchor chain wash pump, underwater engine exhaust, manual fire-fighting system in engine room, trim correction flaps.



### ● IMPRESSIONS

SEA AND WEATHER CONDITIONS DURING BOAT TESTING

**Wind:** none

**Sea:** calm.

PERFORMANCE

**Time needed to reach planing speed:** 5 seconds

**Minimum planing speed at 1,400 rpm's:** 11.5 knots

**Maximum speed at 2,800 rpm's:** 32 knots with 770 hp.

### ● EVALUATION OF PERFORMANCE

**Seakeeping ability, turning and behavior on waves:** under way, the Azimut 42 rides very well, with a low and swift trim on the water even in bad weather conditions

**Wheel and flap response:** efficient and precise

**Visibility in different weather conditions:** excellent from the flying bridge, very good from the salon

**Docking maneuverability:** excellent.



### ● EVALUATION OF COMFORT AND FUNCTIONALITY

**Deck:** easy access and fitted with top quality components

**Flying bridge:** comfortable and of adequate size; cockpit access is very elegant

**Interiors:** finishing and interior décor is of excellent quality and refined taste, good habitability with two cabins and two bathrooms - the three-cabin/three-bathroom version is a bit too tight

**Passengers' comfort:** excellent

**Chart table:** good location

**Galley:** good location and excellent appliances

**Bathrooms:** ample and refined, fitted with modern and ecological systems

**Engine room:** very good access and layout

**Electrical switchboard and plants:** very well positioned and fully fitted.

